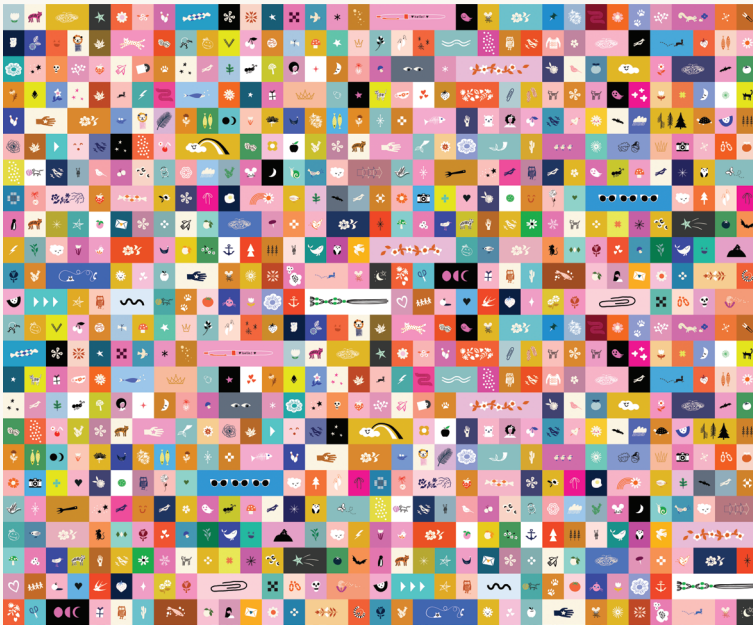


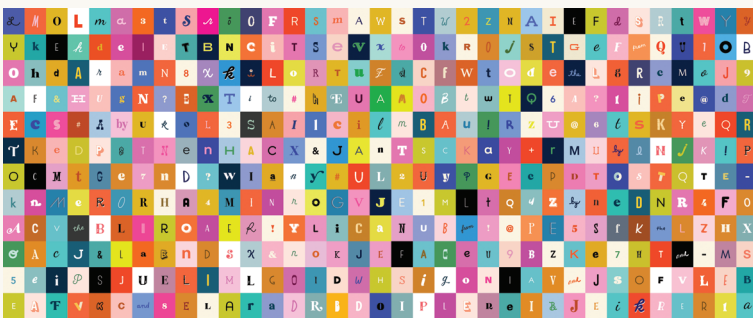


★ COLLABORATIVE COLLECTION ★



RS5181 11
SELVEDGE ICONS | MULTI

FULL REPEAT
44" x 36"



RS5180 11
SELVEDGE LETTERS | MULTI

FULL REPEAT
44" x 18"

In the past year, we have seen an uptick in selvedge collecting, with people using our selvedges to create adorable quilt labels, name tags, bags, garments, and more. You name it, someone's made it! In honor of this trend, we are introducing our Selvedge Magic Mini Collection! This collection is a love letter from our designers to our collectors and fans.

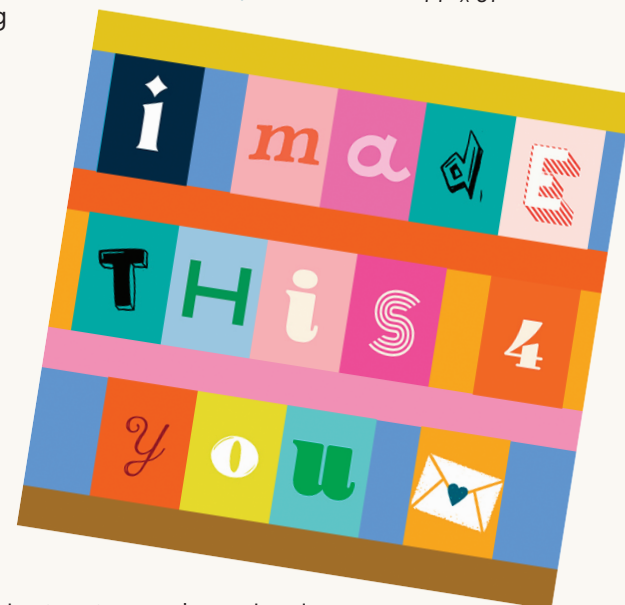
The star of this collection, our Selvedge Magic print, is running yardage that includes almost every selvedge we've ever done in our 11 years of working together! You can get all of the selvedges in 2 1/4 yards of fabric. We also added a Selvedge Icons print, featuring the tiny drawings and designs we've included in our selvedges over the years. Last but not least, the Selvedge Letters print is an assortment of letters taken straight from our selvedges, ready to be fussy-cut and added to projects like quilt labels, name tags, and more.

Flip to the next page to see some project ideas! We will have two free patterns that go with this collection: the Handmade Tag Pattern (shown to the right) and the Swap Talk Quilt (shown on the next page).



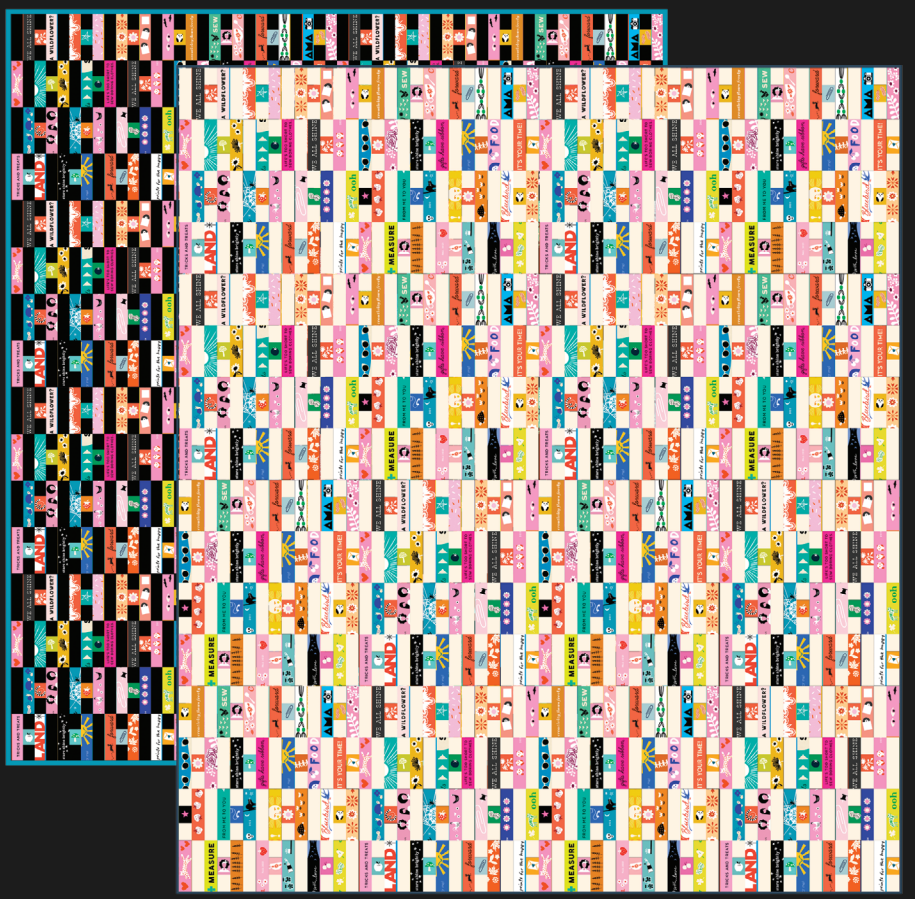
RS5179 11
SELVEDGE MAGIC | MULTI

FULL REPEAT
44" x 81"





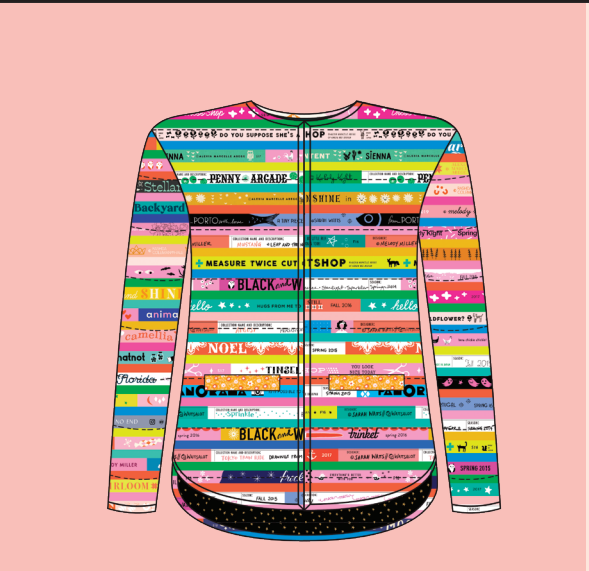
swappable icons!



FREE PATTERN Ruby Star Society | Swap Talk Quilt 42" x 48"



KAT 113 Knot & Thread | All the Things Tote



GS 16002 Grainline Studio | Tamarack Jacket



KAT 111 Knot & Thread | Violet Backpack



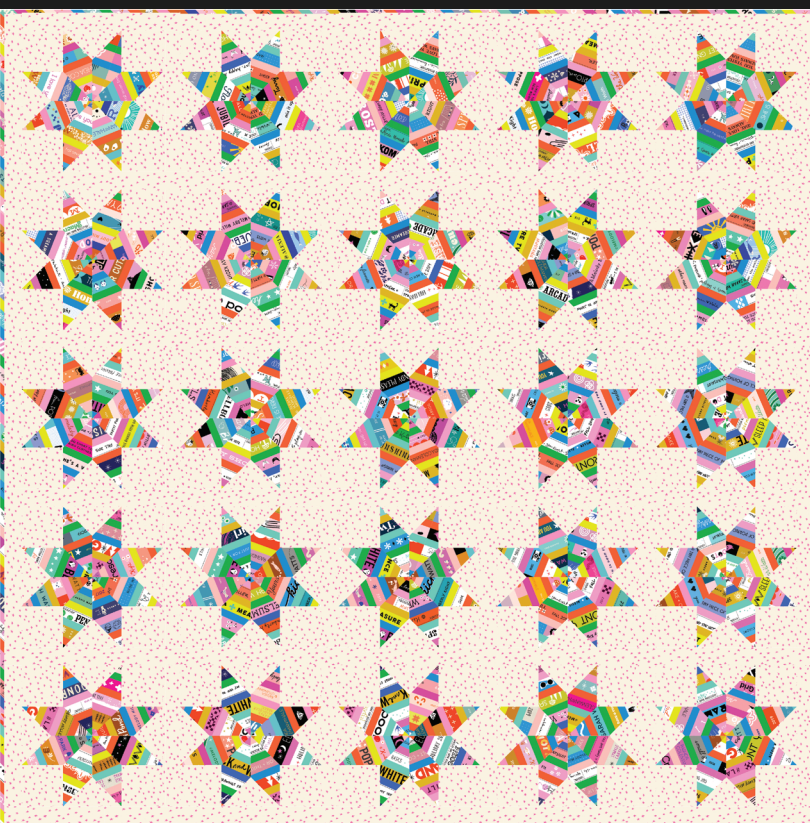
ES 403 SPA Everyday Stitches | Spoolin Around 60" X 80"



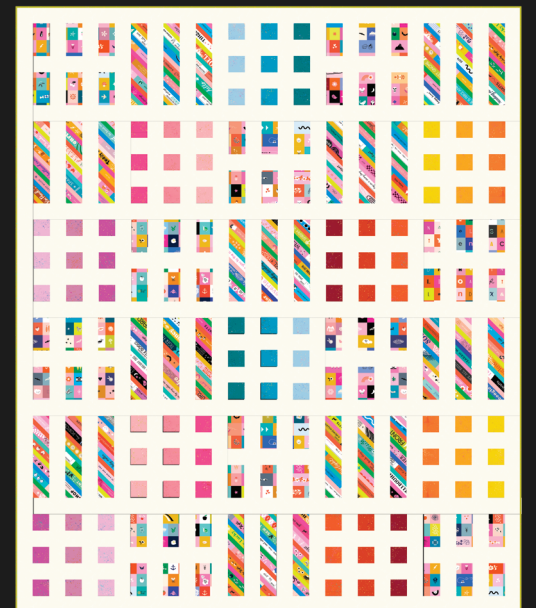
RCH 100P Rashida Coleman-Hale Mod Hexagon 47" X 53"



MM 105 Miss Make Circe 69" x 69"



AMA 108 Alexia Marcelle Abegg | Mystic Rainbow Quilt 69" x 69"



MH 012 Modern Handcraft Dot + Dash 62" x 74"