

Sweet Violet

Jan Patek Quilts



FEBRUARY 2019 DELIVERY

pattern by It's Sew Emma



2223 11 *



2220 11 *

KIT 2220

KIT 2220 ISE 209 / ISE 209G
Hidden Cove Size: 63" x 86"

As it is in most of the Midwest, blossoming flowers are nature's giveaway that spring has arrived. Whether cultivated or growing as wildflowers, *viola missouriensis* color the landscape in shades of violet. Mixed with soft cream, the verdant green of new leaves and the soil from which it all grows, Sweet Violet captures the colors of the season.

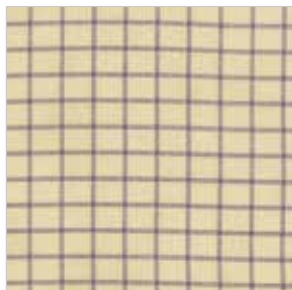
pattern by Jan Patek Quilts



2224 11 *



2226 11 *



2227 11



2228 11



2221 11



JPQ 2216 / JPQ 2216G
Tulgey Wood Farms Size: 42" x 46"

BOM



2220 13 *



2221 13



2223 13



2227 13 *



2228 13



2224 13



2226 13 *



2222 13 *



JPQ 2220 / JPQ 2220G Home Sweet Home Log Cabin Size: 56" x 56"



JPQ 2219 / JPQ 2219G
Beeskep & Violets Size: 36" x 36"



2228 14



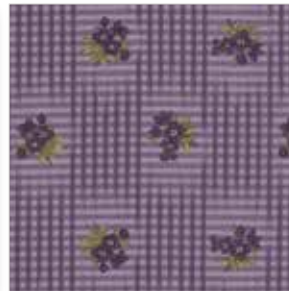
2226 14 *



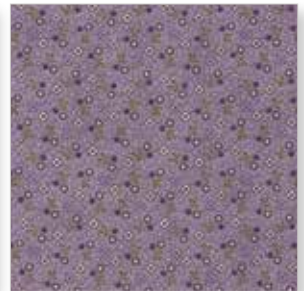
2220 14



2223 14



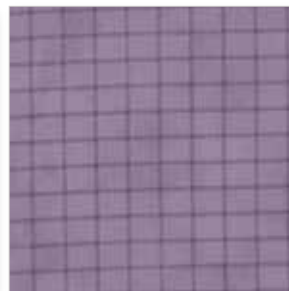
2222 14



2224 14 *



2221 14 *



2227 14 *



2222 11 *



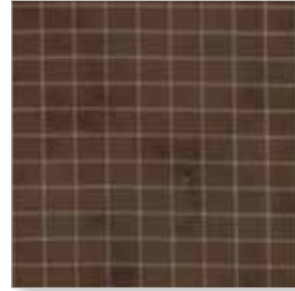
JPQ 2217 / JPQ 2217G Little House in the Big Garden Size: 88" x 88"



2220 15



2221 15 *



2227 15



2223 15 *



2226 15 *



2228 15



JPQ 2218 / JPQ 2218G
Welcome Size: 26" x 16"



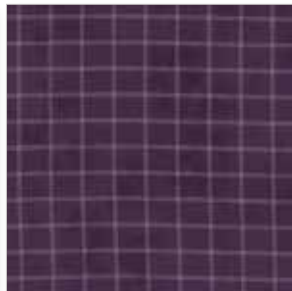
2221 12 *



2220 12 *



2228 12



2227 12



2226 12 *



2223 12 *

2220

Asst.
15

Asst.
10

Low Cal
10

AB

F8

JR

LC

MC

PP

KIT

•36 Prints •100% Premium Cotton

JR's, LC's, MC's & PP's include two each of 2226-11, 12, 13 & 14.