



1

PotLuck

American Jane



2

I have very good memories of potluck picnics at aunt Maggie's farm! Tables were put up by the uncles in the yard with old doors and saw horses and the benches were boards on crates. The aunts brought out the hot dishes while the watermelons cooled in the creek with the soda pop! After the pies, cakes and homemade ice cream cones were eaten, the adults sat in lawn chairs to drink coffee from the thermos while the cousins bounced on the board used to cross the creek but more often ended up falling in!

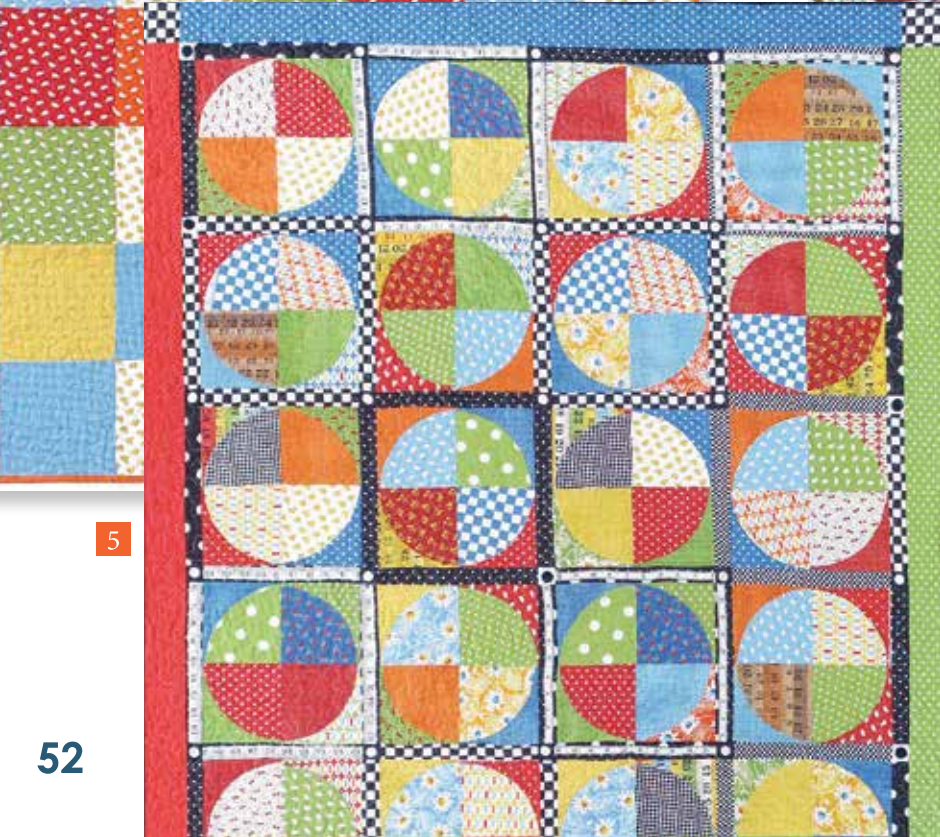
This *Potluck* collection is reminiscent of those summer days... summer sunshine blended with a cool breeze.



3



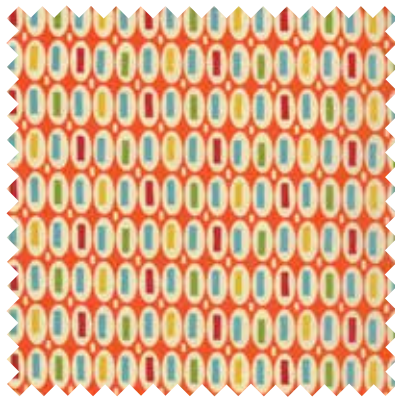
4



5



No 21641 14
Carrot



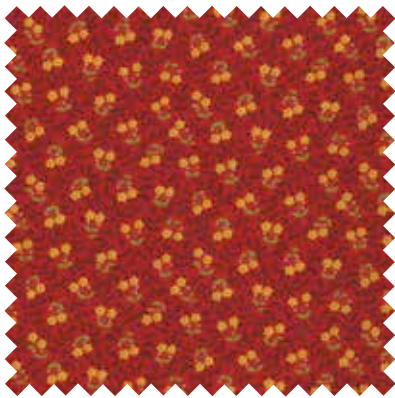
No 21648 13*
Carrot



No 21649 13
Carrot



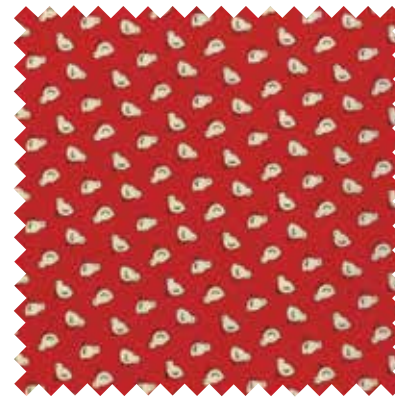
No 21643 13*
Carrot



No 21642 13*
Cherry



No 21646 11*
Multi



No 21643 12
Cherry



No 21644 13
Cherry

1 AJ 326
AJ 326G
Fun on the Farm
Size: 47" x 60"

2 AJ 328
AJ 328G
Red Daisy
Size: 63" x 63"

3 AJ 324
AJ 324G
Baby Chicks
Size: 42" x 48"

4 AJ 325
AJ 326G
Rainbow to Go
Size: 34" x 34"

5 AJ 329
AJ 329G
Ready Set Go!
Size: 45" x 55"



No 21648 12
Cherry



No 21649 12*
Cherry



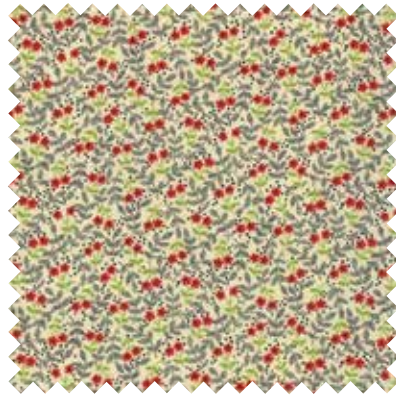
No 21641 15*
Cornbread



No 21648 14
Cornbread



No 21646 14*
Cornbread



No 21642 11*
Cream



No 21643 11*
Cream



No 21649 14
Cornbread



No 21649 16
Sky



No 21641 17*
Sky



No 21643 16*
Sky



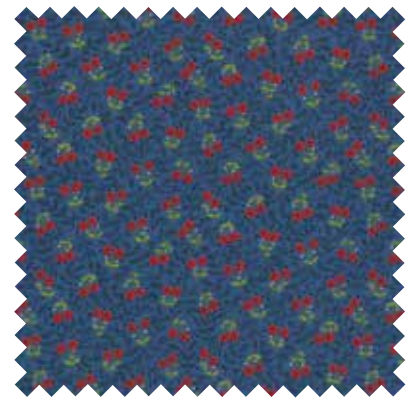
No 21648 17*
Denim



No 21649 17
Denim



No 21644 18*
Denim



No 21642 18
Denim

Come in, come in and sit down. You are part of the family!

QUOTE FROM SANDY'S MINIATURE CHAIR WALL



Painted Floor in Sandy's Studio

"I am living the dance of life the best I know how, but learning more each day!"

moda

1. How did you and Moda get hooked up? How long have you been designing fabric?

Moda came to my booth at my very first market. They asked me where I get my fabric and I told them any where I can including using dinner napkins. Then they asked if I would be interested in fabric design. That's when I stopped breathing! Yes I had thought about that and who would be at the top of my favorite fabric companies that I would want to work with! MODA! I was already in love.

2. Do you work out of your home or do you have a separate design studio?

I have a design studio in my home. I started out in a two stall garage just like Steve Jobs, but now I have half of the upstairs with a beautiful view out of a very large window. It is my happy space! I love to wake up in the morning and know that I can go play in my room all day!

3. Where did you find inspiration for this line?

When I have a new line, I have few ideas going but it's not until I have the fabrics in hand that the creative juices start flowing. Then one idea leads to another! Sometimes I feel I have to have someone to stop me!

4. Deadlines – do you fear them or do they motivate you to create?

Deadlines stress me out! I panic so then I don't breath then I can't think! I usually calm down but it takes me awhile

#5 my heart races at the site of a pile of fabric! I love touching it , I love cutting it up, I love lots of little stacks of parts to piece, I love piecing them together, I love pressing. ,and the smell of the iron,I love quilting the finished quilt, and I love binding quilts! But most of all I love starting a new quilt!

8. Do you sew and how much do you get to?

I get to sew every day and it is still not enough! I get excited to go on retreats and sew until midnight if I want, but then I get excited about going home and sew all day again! I am definitely living my dream

8. What is your favorite TV show?

I'm hooked on Korean dramas! They make me laugh and cry, but I love getting hooked on characters and their stories. Some stories are 60 one hour long episodes! Plenty of time to learn all the characters. They are all subtitled so its like reading a great book with pictures . I recommend you start with *Jewel in the Palace!*



AJ 330 / AJ 330G Day Tripper Size: 62" x 62"



Alphabet Plus Upper and lower case – blocks are approx. 3"x3"



№ 21645 12 Cherry

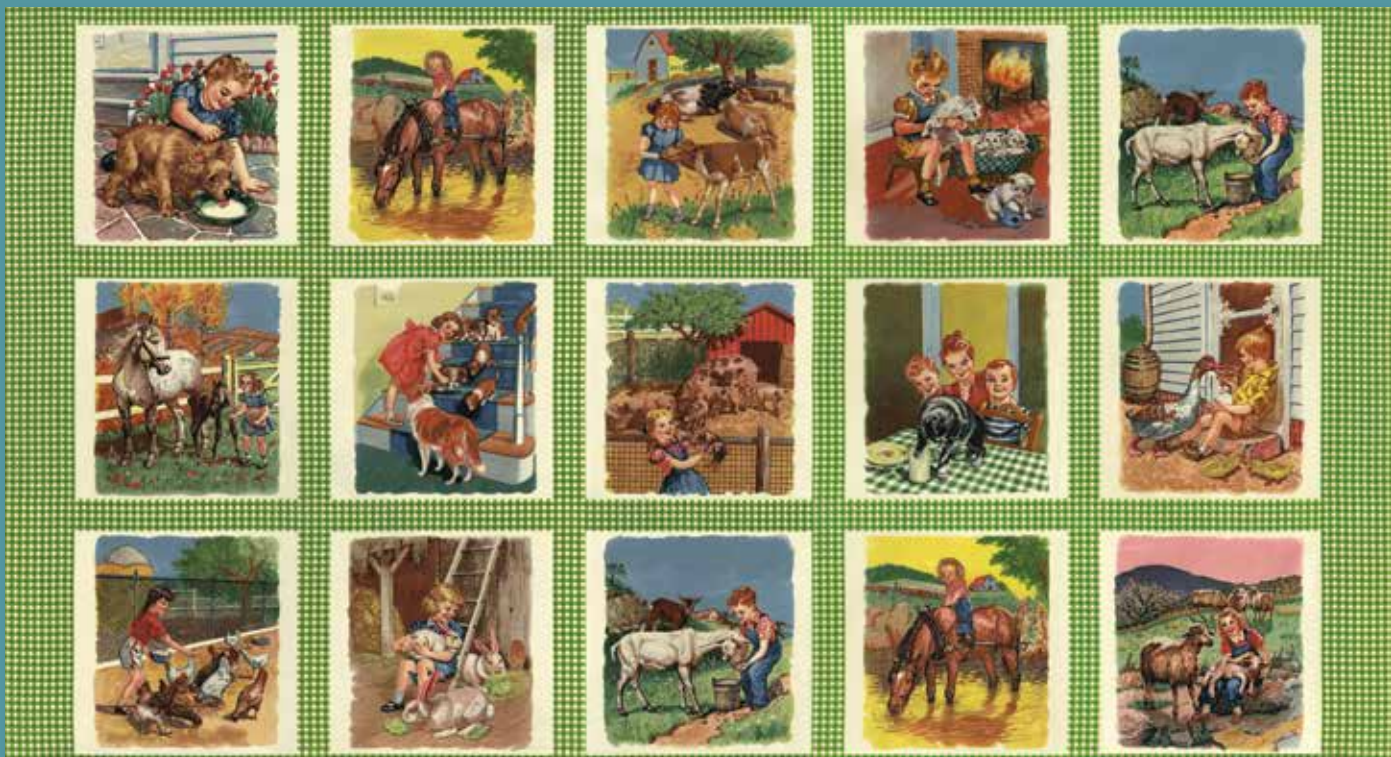


№ 21645 11*
Licorice



№ 21645 17
Denim

№ 21640 13 Sweet Pea



Farmyard Panel 24"x44"
Blocks approx. 7"x7"



№ 21640 14
Sky



№ 21640 11*
Cherry



No 21643 15
Sweet Pea



No 21641 16*
Sweet Pea



No 21648 15*
Sweet Pea



No 21646 13
Antique



No 21642 16
Sweet Pea

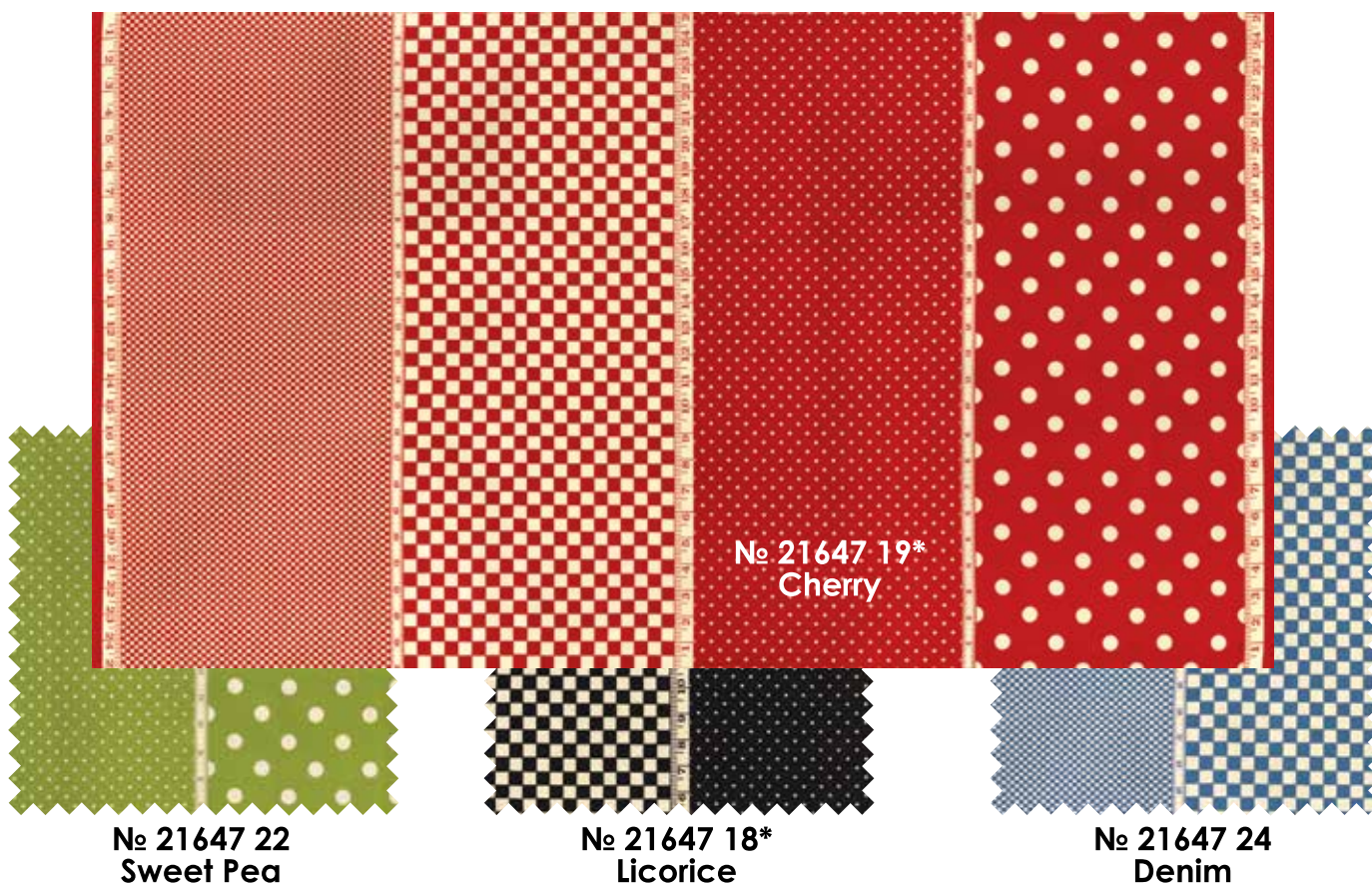


No 21644 16
Sweet Pea



No 21649 15*
Sweet Pea

4 Times the Fun! – four different prints in one WOF



No 21647 22
Sweet Pea

No 21647 18*
Licorice

No 21647 24
Denim

21640

Asst.
15

Asst.
10

Low Cal
20

AB

JR

LC

MC

PP

• 100% Premium Cotton • 40 Prints
AB includes one each of 21640-11 and 21645-11 totaling 36 skus.
JR's, LC's, MC's and PP's do not include 21640 and 21645/ • JR's, LC's, MC's and PP's include two each of 21649.

Delivery: October, 2013