

Crossroads

Jan Patek Quilts



01



02

01 JPQ 2124
JPQ 2124G
Eagles & Roses- 7 month BOM
Size: 98" x 98"

02 JPQ 2126
JPQ 2126G
Snow Days-7 month BOM
Size: 70" x 60"

03 JPQ 2127
JPQ 2127G
Cityscape
Size: 64" x 88"

04 JPQ 2129
JPQ 2129G
From My Heart
Size: 56" x 56"

05 JPQ 2128
JPQ 2128G
Snowbirds & Star Trees
Size: 36" x 40"



03



04



05



No. 2126 21*
Red



No. 2121 11
Red



No. 2122 11*
Red



No. 2120 11*
Red



No. 2120 17
Tan



No. 2127 13*
Teal



No. 2121 13*
Teal



No. 2126 23*
Teal



JPQ 2125 / JPQ 2125G
Let it Snow Size: 72" x 92"

Crossroads, the new fabric line from Jan Patek, is where rich patterns and warm muted colors meet. Great for any quilt that calls for richness and pizzaz! From large stunning floral prints with intense colors to simple charming prints in muted airy colors, *Crossroads* is the perfect fabric line for Summer, Spring, Winter, and Autumn projects. Jan has outdone herself with 2 different choices for block of the month projects, both classic and timeless. Ask for Jan Patek fabrics and patterns at your favorite store August 2013.

www.janpatekquilts.com

№ 2099 27
Tan

№ 2099 28
Chocolate

№ 2099 24
Dill

№ 2099 21
Red

№ 2099 23
Teal

№ 2099 22
Black

Crossroads

Jan Patek Quilts



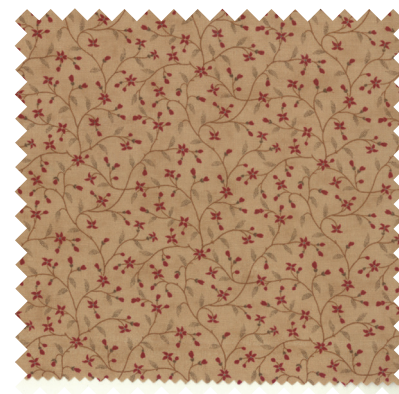
№ 2121 17*
Tan



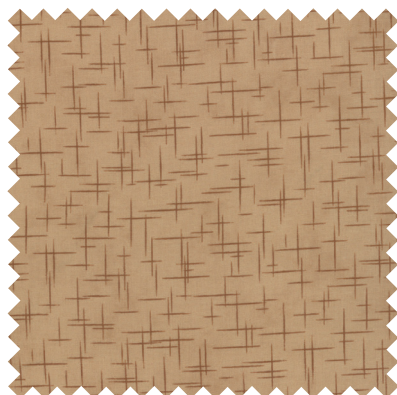
№ 2125 17
Tan



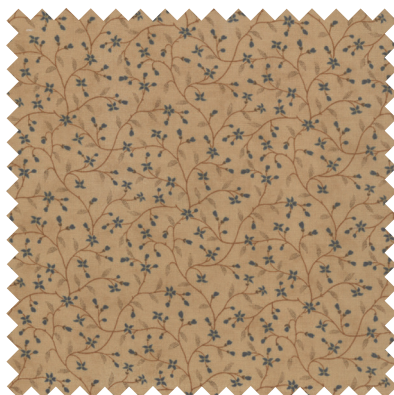
№ 2126 17
Tan



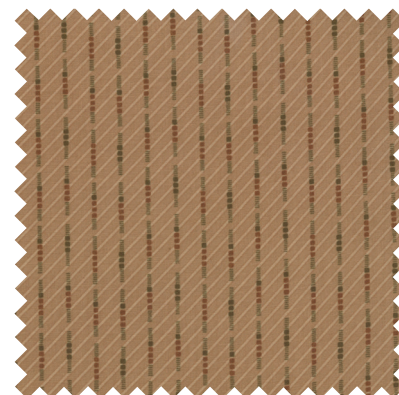
№ 2123 17*
Tan Red



№ 2122 17*
Tan



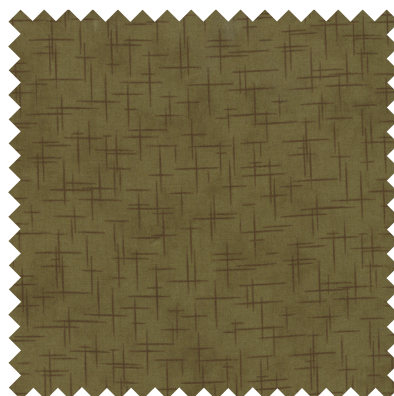
№ 2123 27
Tan Teal



№ 2127 17
Tan



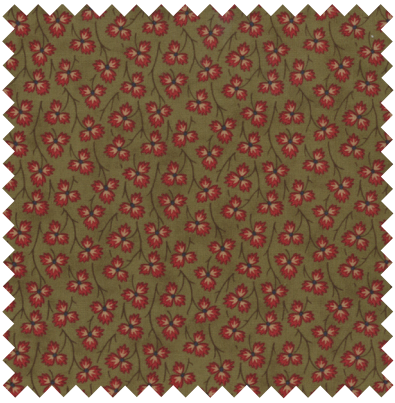
№ 2121 14*
Dill



№ 2122 14
Dill



№ 2123 14
Dill



No 2125 14*
Dill



No 2127 14*
Dill



No 2126 12*
Black



No 2120 12*
Black



No 2121 12
Black



No 2122 12*
Black



No 2126 22
Black Tan



No 2125 12
Black



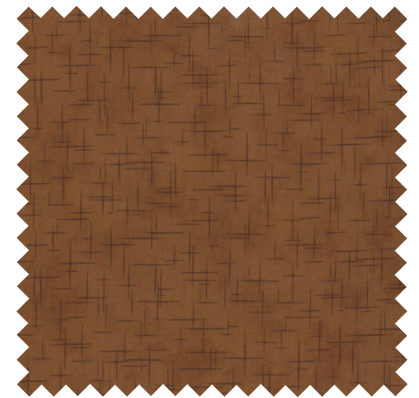
No 2126 16*
Caramel



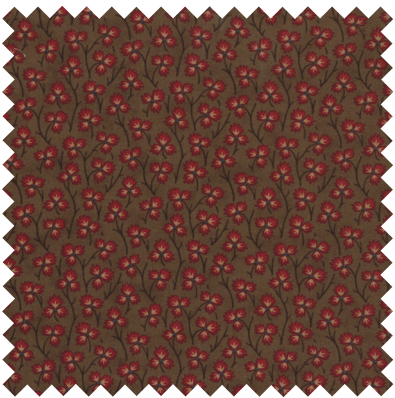
No 2127 16
Caramel



No 2121 16*
Caramel



No 2122 16*
Caramel



No 2125 16*
Chocolate



No 2126 28
Chocolate



No 2120 18*
Chocolate



No 2121 18
Chocolate

2120

Asst.
15

Asst.
10

Low Cal
20

AB

DR

JR

LC

PP

MC

- 40 Prints
- 100% Premium Cotton

Delivery: August, 2013