

Prints Available  
Plain &  
Brushed

ADD "B" TO STOCK #



# TRAILS END

Holly Taylor

Discover the best nature has to offer while traveling by trail along the Canadian border. At the Trails End, deepest into the forest, you may spot a moose or a bear and the sounds and color are as if no human being has been there before you. It is a feast for the eyes, colors so rich you can reach out and touch them. That thought was our inspiration for Trails End, bringing you those rich colors in warm brown and rich walnut with the clay and carmel accents for the beautiful fall leaves and of course all the wonderful greens from nature's palette.



Serenity – #CHD 1208/ CHD 1208G Finished Quilt Measures 36" x 36"



4610 16  
Earth

4610 51  
Earth



4610 82  
Pine



4610 37  
Pine



4610 24  
Pine



*moda*

4610 36  
Wine



4610 39  
Pine



4610 73  
Pine

4610 38  
Rust



4610 12  
Orange - Brown

4610 88  
Autumn Orange



4610 87  
Wine



4610 40  
Wine



4610 86  
Earth



4610 81  
Wine



4610 44  
Mist



4610 97  
Wheat Wine



4610 52  
Pine

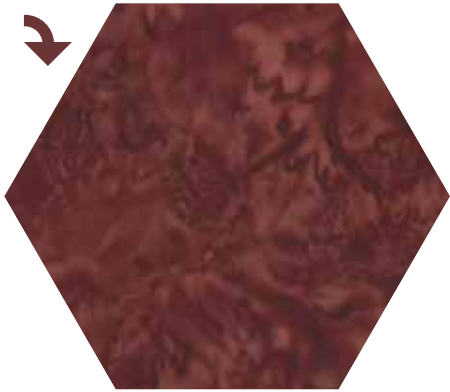


4610 21  
Autumn Orange

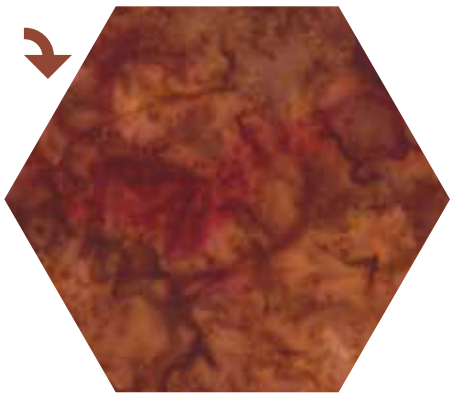


# BATIK Marbles

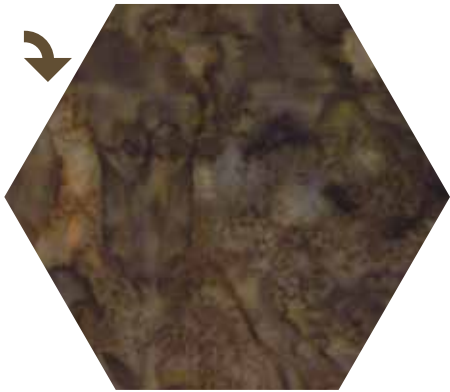
4610 98  
Wine



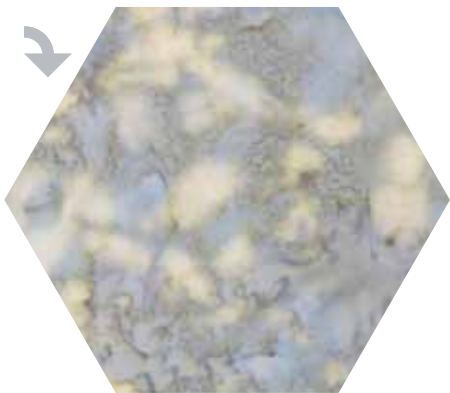
4610 105  
Autumn  
Orange



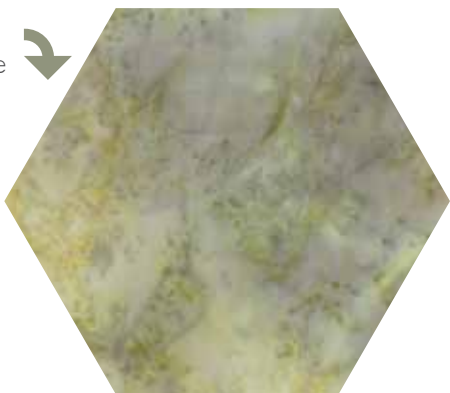
4610 104  
Earth



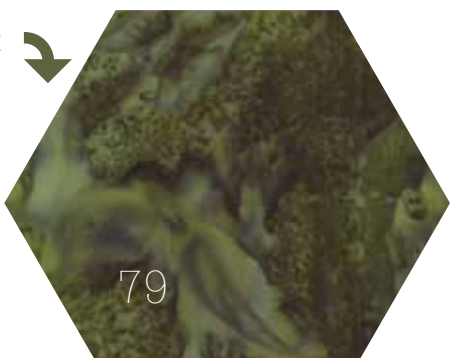
4610 112  
Mist



4610 103  
Light Pine



4610 102  
Pine



4610 34  
Wheat



4610 95  
Mist



4610 46  
Wheat



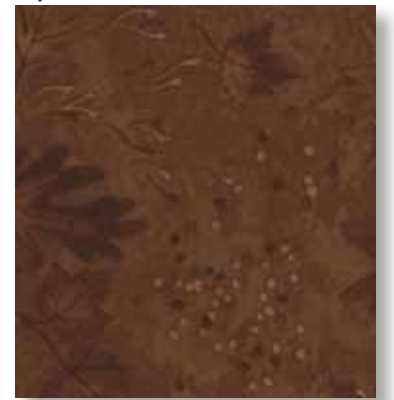
4610 84  
Wheat



4610 96  
Wheat



6493 23  
Tonal Warm Brown



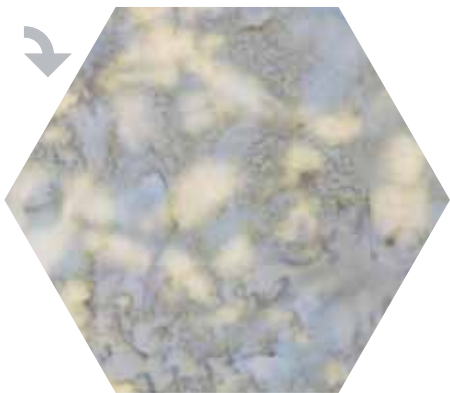
6490 11  
Lichen



6496 11  
Parchment

6494 11  
Parchment

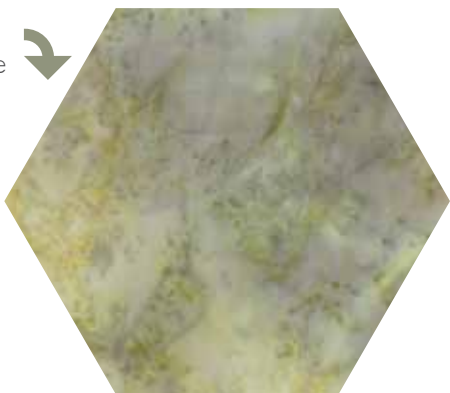
4610 112  
Mist



6492 11  
Parchment

\*6493 21  
Tonal Parchment

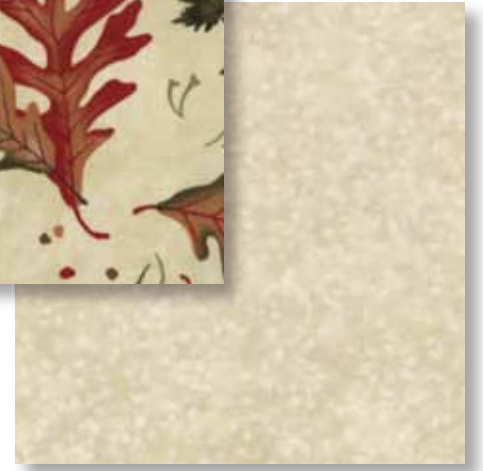
4610 103  
Light Pine



6495 11  
Parchment

\*6491 11  
Parchment

\*6493 11  
Parchment



moda

\*6493 22  
Tonal Red Clay



\*6495 12  
Red Clay

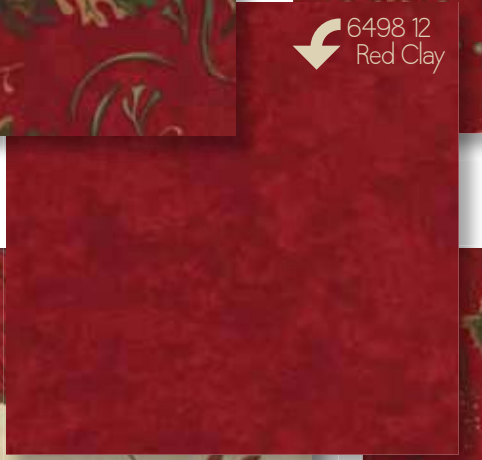
\*6492 12  
Red Clay



6493 12  
Red Clay



6498 12  
Red Clay



6492 13  
Warm Brown



\*6490 14  
Red Clay



6491 12  
Red Clay



\*6493 13  
Warm Brown



6498 14  
Dark Walnut



\*6497 13  
Warm Brown



\*6494 14  
Dark Walnut

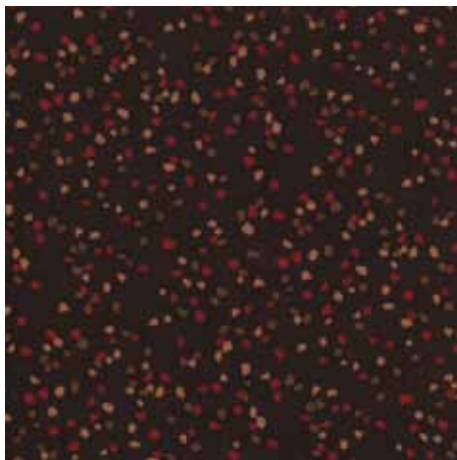


Prints  
Available  
Plain &  
Brushed  
ADD "B" TO STOCK #

6493 14  
Dark Walnut



\*6495 14  
Dark Walnut



\*6492 14  
Dark Walnut



6491 14  
Dark Walnut



\*6496 15  
Lichen



\*6493 15  
Lichen

\*6491 15  
Lichen



\*6497 15  
Lichen

6498 15  
Lichen



\*6494 15  
Lichen

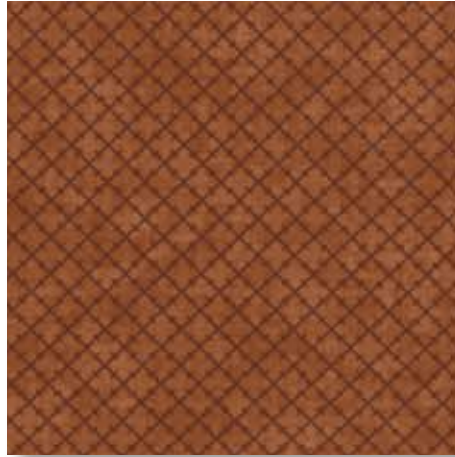
6491 16  
Carmel



6496 16  
Carmel



6497 16  
Carmel



6493 26  
Tonal Carmel



\*6492 17  
Pine



6493 17  
Pine



\*6490 15  
Dark Walnut



\*6493 27  
Tonal Pine



Prints  
Available  
Plain &  
Brushed  
ADD "B" TO STOCK #

6498 17  
Pine



moda

# PATTERNS

Additional patterns options from various pattern vendors.  
Add "G" to the stock number for the patterns to ship with the fabric.

Woodland Stream – #AQD 0222/ AQD 0222G  
Finished Quilt Measures 63" x 79"



Rustic Star – #AQD 0105/ AQD 0105G  
Finished Quilt Measures 37" x 37"



Lakeside – #CHD 1209/ CHD 1209G  
Finished Quilt Measures 52" x 68"



Pegs – #MPC 366/ MPC 366G  
Finished Quilt Measures 48" x 66"

## October Delivery

SKUS: 40 PRINTS, 40 BRUSHED, 30 BATIKS  
CONTENT: 100% COTTON

### PRINTS:

ASST. 6490-15 15 YARDS OF EACH  
ASST. 6490-12 12 YARDS OF EACH  
ASST. 6490-10 10 YARDS OF EACH  
ASST. 6490-10H 10 YARDS OF 20 SKUS\*  
6490AB BUNDLE: 40 SKUS 18"X 22"  
6490JR JELLYROLL - (40) 2½"X 45" STRIPS - PK 4  
6490LC LAYER CAKE - (42) 10"X 10" SQUARES - PK 4  
6490PP (42) 5"X5" SQUARES - PK 12

### BRUSHED 40:

ASST. 6490-15B 15 YARDS OF EACH  
ASST. 6490-12B 12 YARDS OF EACH  
ASST. 6490-10B 10 YARDS OF EACH  
ASST. 6490-10HB 10 YARDS OF 20 SKUS\*  
6490ABB BUNDLE: 40 SKUS 18"X 22"  
6490JRB JELLYROLL - (40) 2½"X 45" STRIPS - PK 4  
6490LCB LAYER CAKE - (42) 10"X 10" SQUARES - PK 4  
6490PPB (42) 5"X5" SQUARES - PK 12

### BATIKS 30:

ASST. 4610-10 10 YARDS OF EACH  
4610AB BUNDLE: 22 SKUS 18"X 22"  
4610JR JELLYROLL - (40) 2½"X 45" STRIPS - PK 4  
4610PP (42) 5"X5" SQUARES - PK 12

\*JR's and PP's include two each of 4610-86 to 4610-112.

# Holly Taylor

# TRAILS END