

LA PETITE ECOLE

FRENCH GENERAL

La Petite Ecole, was based on a collection of old fabric prints that might have covered children's school books in the 19th century. Alphabets, dictionary pictures and small prints - all in shades of French blue, old red and hemp feel as if they are right out of an old French schoolhouse.

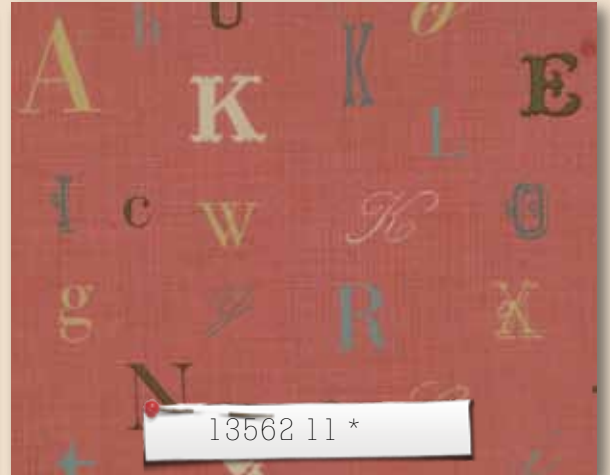
53

moda

Visit French General's blog @ frenchgeneral.blogspot.com



13560 19 *



13562 11 *

*Panel Measures 24" x 44"



13564 11



13565 11 *



13566 11 *



13567 11



13568 11 *



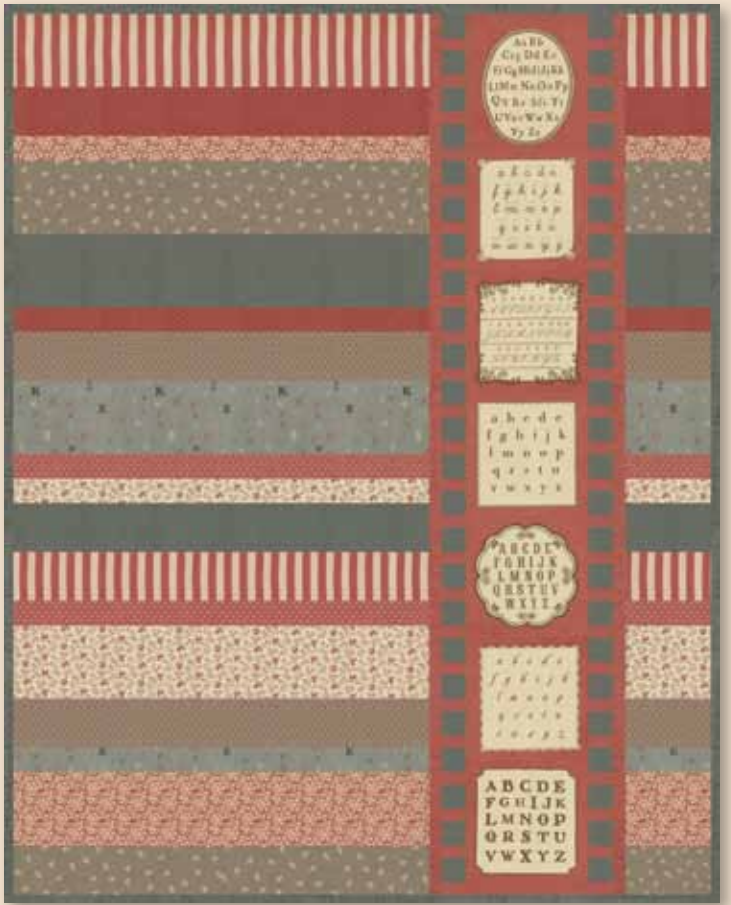
13569 11



13562 12 *



13564 12



PS13560 La Petite Encole Project Sheet by Natalia Bonner



13567 12 *



13568 12 *



13563 12



13569 12 *



13529 62 *



13563 13



13561 19 *



13562 13



13529 65 *



13567 14 *



13568 21



13565 19



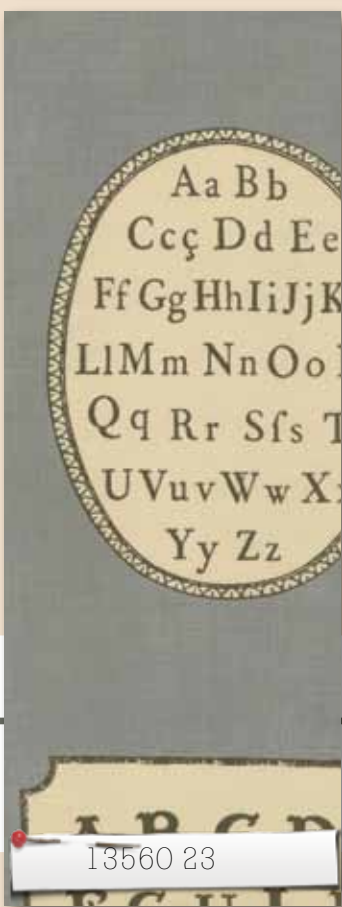
13561 22



13569 16



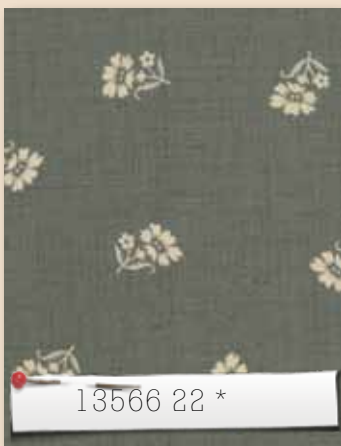
13564 13 *



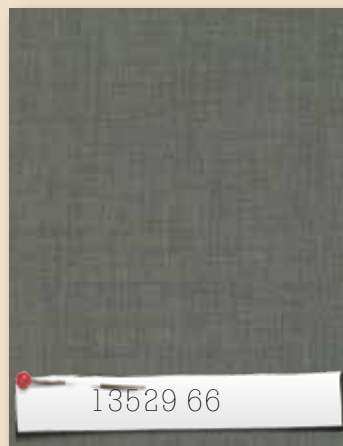
13560 23



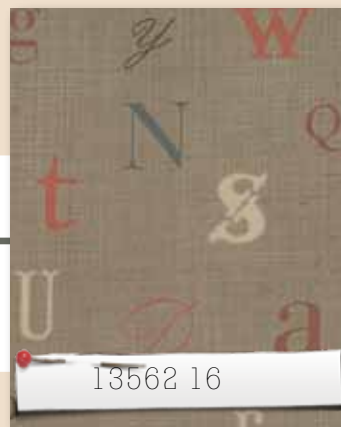
13563 16 *



13566 22 *



13529 66



13562 16



13568 18 *



13563 22



13560 26

*Panel Measures 24" x 44"



13567 17 *



13529 69



13569 21



13561 26 *



13566 24



13565 16



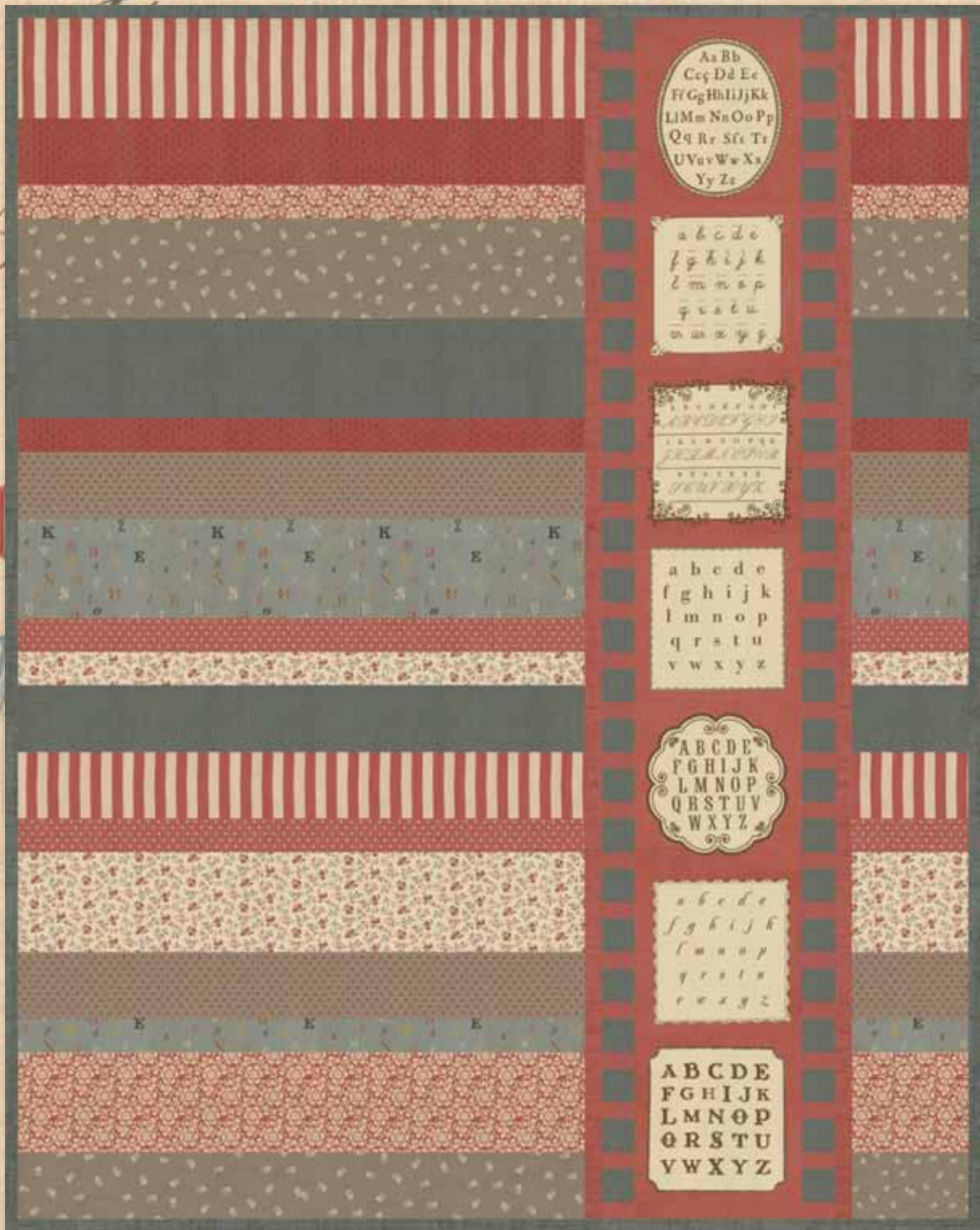
13529 64

ORDER ONLINE 24 HOURS A DAY AT WWW.MODAFABRICS.COM

LA PETITE ECOLE

December 2010

- Skus:40
- 44"-45" 100% Cotton
- Asst. 13560-15 15 Yards of Each
- Asst. 13560-10 10 Yards of Each
- Asst. 13560-10H *10 Yards of 20 Skus
- PS13560 Project Sheet
- 13560AB Bundle: 40 Skus
- 13560F8 Bundle: 40 Skus
- 13560JR Jellyroll: (40) 2 1/2" x 45" Strips - multiples of 4
- 13560PP (42) 5"x5" Squares - multiples of 12.
- 13560LC Layer Cake - (42) 10"x10" Squares - multiples of 4.



La Petite École *moda*
by FRENCH GENERAL

Finished Size: 57"x72"

La Petite École

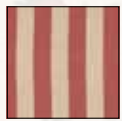
by FRENCH GENERAL

Finished Size: 57"x 72"

Quilter Basics

*Read instructions before beginning a project.
All instructions include a ¼" seam allowance.
22" measurement is approximate.
WOF—approximately 40".*

Cutting



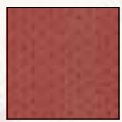
Fabric 1:
1-6½"x WOF
1-4½"x WOF



Fabric 5 (Includes Binding)
1-6½"x WOF
1-4½"x WOF
13-2½"x WOF
From 6 strips subcut 12-2½"x 22"
for Filmstrip.



Fabric 8:
2-2½"x WOF



Fabric 2:
1-4½"x WOF
1-2½"x WOF



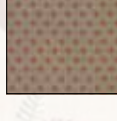
Fabric 6:
2-4½"x WOF



Fabric 9:
1-6½"x WOF
1-2½"x WOF



Fabric 3:
1-6½"x WOF
1-2½"x WOF



Fabric 7:
1-6½"x WOF
1-2½"x WOF



Fabric 10:
11-1½"x WOF
set aside 4 strips for
sashings then
subcut - 12-1½"x 22"
2-1½"x 10½"

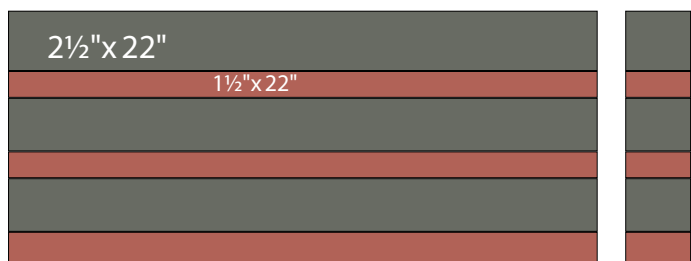
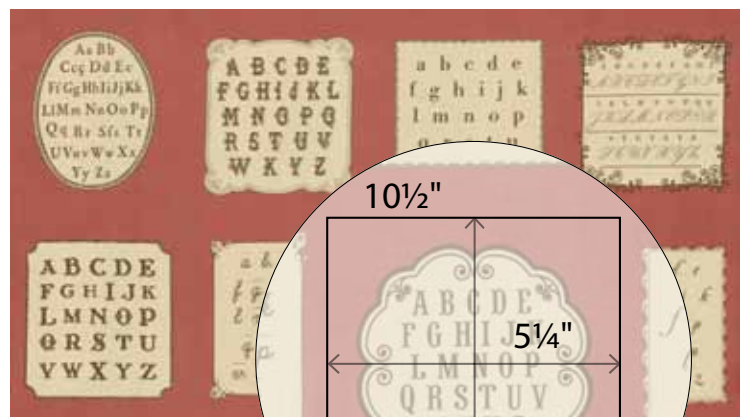


Fabric 4:
1-6½"x WOF
1-4½"x WOF

58

Construction

- Panel:** From the panel cut 7-10½"x 10½" squares. Find the center of the image then measure 5¼" from the center in each direction then cut.
- Filmstrip:** Sew 3-2½"x 22" Fabric 5 strips and 3-1½"x 22" Fabric 10 strips together. Make 4 strip sets. Cut into 16-2½" wide segments.



Make 4 strip sets

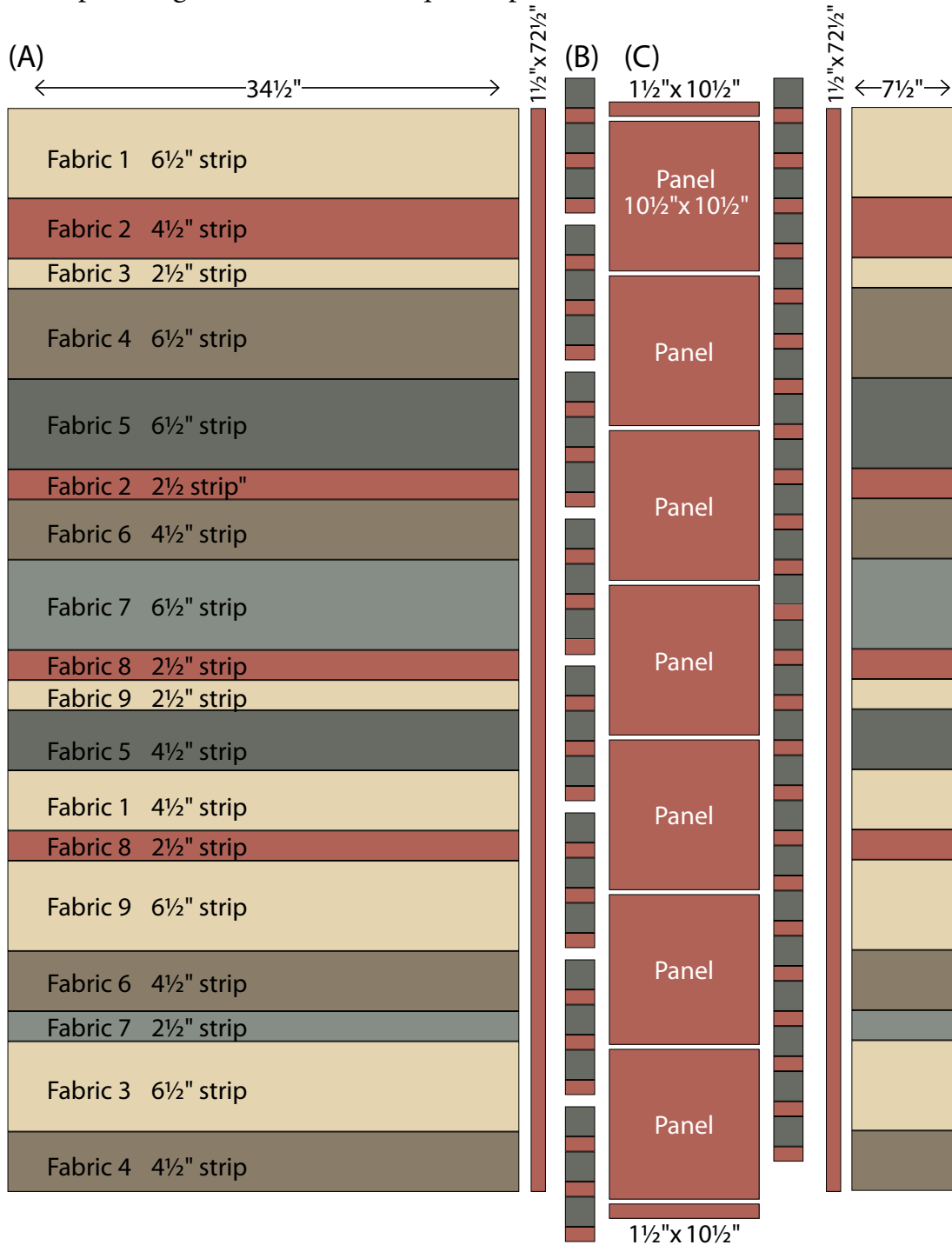
←2½"→
Cut 16

moda

Quilt Assembly

- 3 (A) Sew the 18 WOF fabric strips together. *See diagram.* Cut into $1-34\frac{1}{2}$ " and $1-7\frac{1}{2}$ " section.
 (B) Combine 8 Filmstrip segments to make a large Filmstrip. Make 2. (C) Join $2-1\frac{1}{2}$ "x $10\frac{1}{2}$ " Fabric 10 strips and $7-10\frac{1}{2}$ "x $10\frac{1}{2}$ " Panel squares. *See diagram.*

Join $4-1\frac{1}{2}$ "x WOF Red strips end to end then cut $2-1\frac{1}{2}$ "x $72\frac{1}{2}$ " sashing strips.
 Sew all the parts together to make the quilt top.



- 4 Join the $7-2\frac{1}{2}$ "x WOF Binding strips.
 Layer, quilt and bind the quilt. ENJOY!

La Petite École

by FRENCH GENERAL

Finished Size: 57"x72"

Fabric Requirements:



One Panel
(13560-19)



Fabric 1 – ½ yard
(13569-12)



Fabric 2 – ⅓ yard
(13568-11)



Fabric 3 – ⅓ yard
(13565-11)



Fabric 4 – ½ yard
(13566-24)



Fabric 5 – 1⅓ yards
(includes binding)
(13529-66)



Fabric 6 – ⅓ yard
(13563-22)



Fabric 7 – ⅓ yard
(13562-13)



Fabric 8 – ¼ yard
(13563-12)



Fabric 9 – ⅓ yard
(13567-12)



Fabric 10 – ½ yard
(13529-62)

Backing: 3½ yards



60

moda

MODAFABRICS.COM

PS13560